

FLEXLUX

Sample Book

Fabric, leather & surface

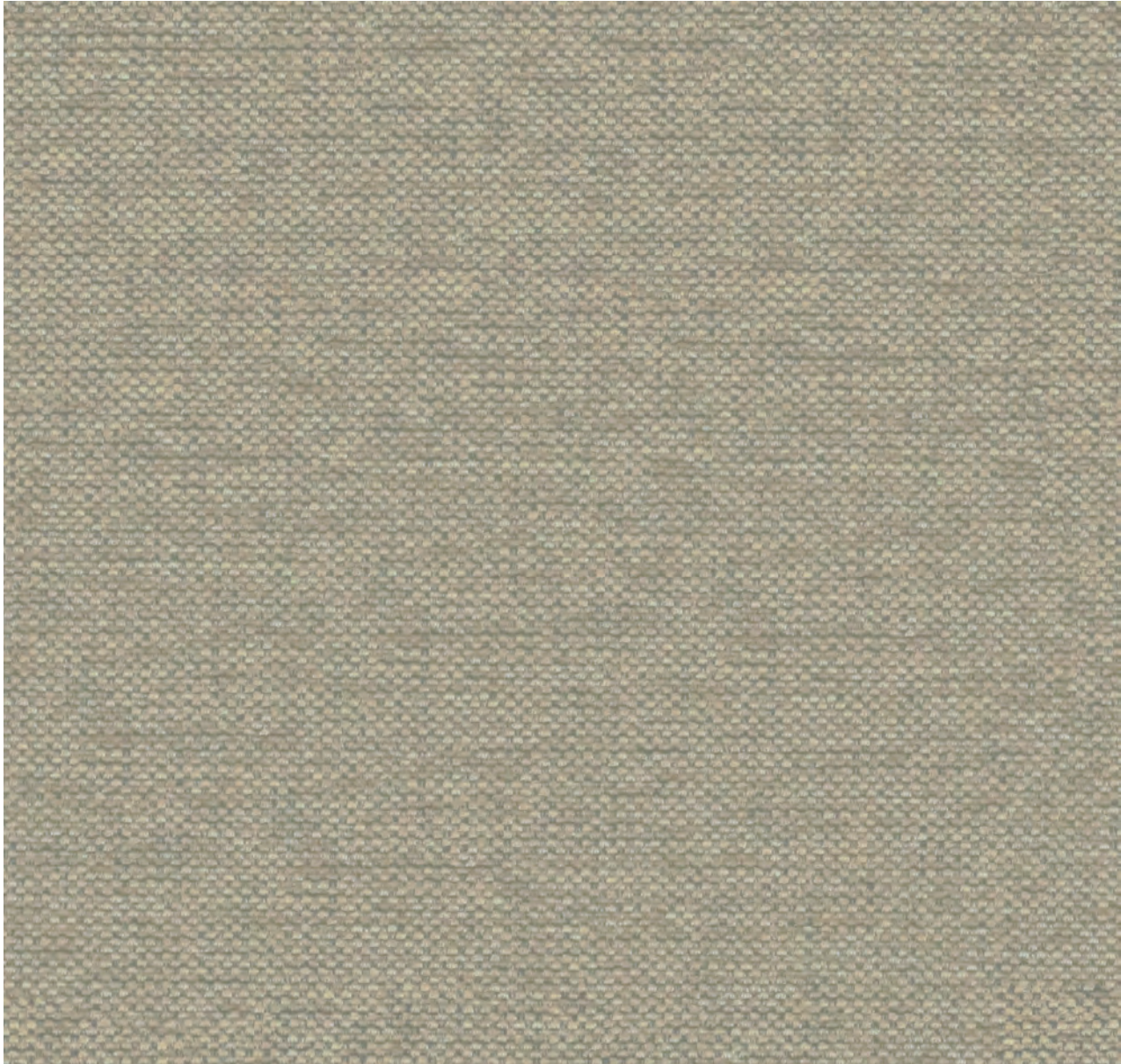
Fire resistant

GROUP 1

Copparo

Lima

COPPARO

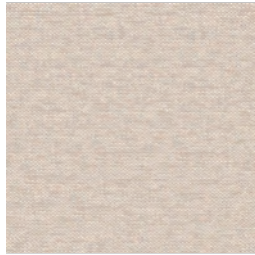


Price group 1

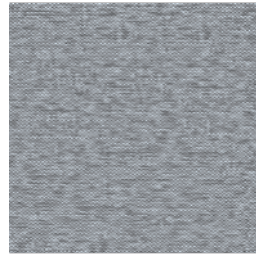
Copparo is produced by a world leader in advanced textiles and offers great value for money. A high tech polyester yarn is used and the fabric is woven on state of the art machinery. The design is contemporary and modern, yet has a soft and pleasant touch

Fire resistant / OEKO-TEX® certified fabric

COPPARO



Sandy Beige
4610



Sophisto Grey
4611



Dervit Grey
4616



Deep Forrest Green
4617

Price group 1

Composition: **100% Polyester**

Abrasion Resistance: **70.000 martindale**

Fastness to light 1-8 (8 = best): **5**

Pilling scale 1-6 (6 = best): **4-5**

Fire resistant / OEKO-TEX® certified fabric

LIMA



Price group 1

Lima is an elegant and modern fabric with striped velvet effect. The lines in the Lima fabric ensure a beautiful and characteristic expression. The fabric feels incredibly soft and will add an exclusive touch to your furniture. Lima is OEKO-TEX® certified and has a high abrasion resistance.

Fire resistant / OEKO-TEX® certified fabric

LIMA



Off White
4601



Taupe Brown
4602



Dusty Green
4603

Price group 1

Composition: **85% Polyester, 15% Polyamide**

Abrasion Resistance: **70.000 martindale**

Fastness to light 1-8 (8 = best): **5**

Pilling scale 1-6 (6 = best): **4-5**

Fire resistant / OEKO-TEX® certified fabric

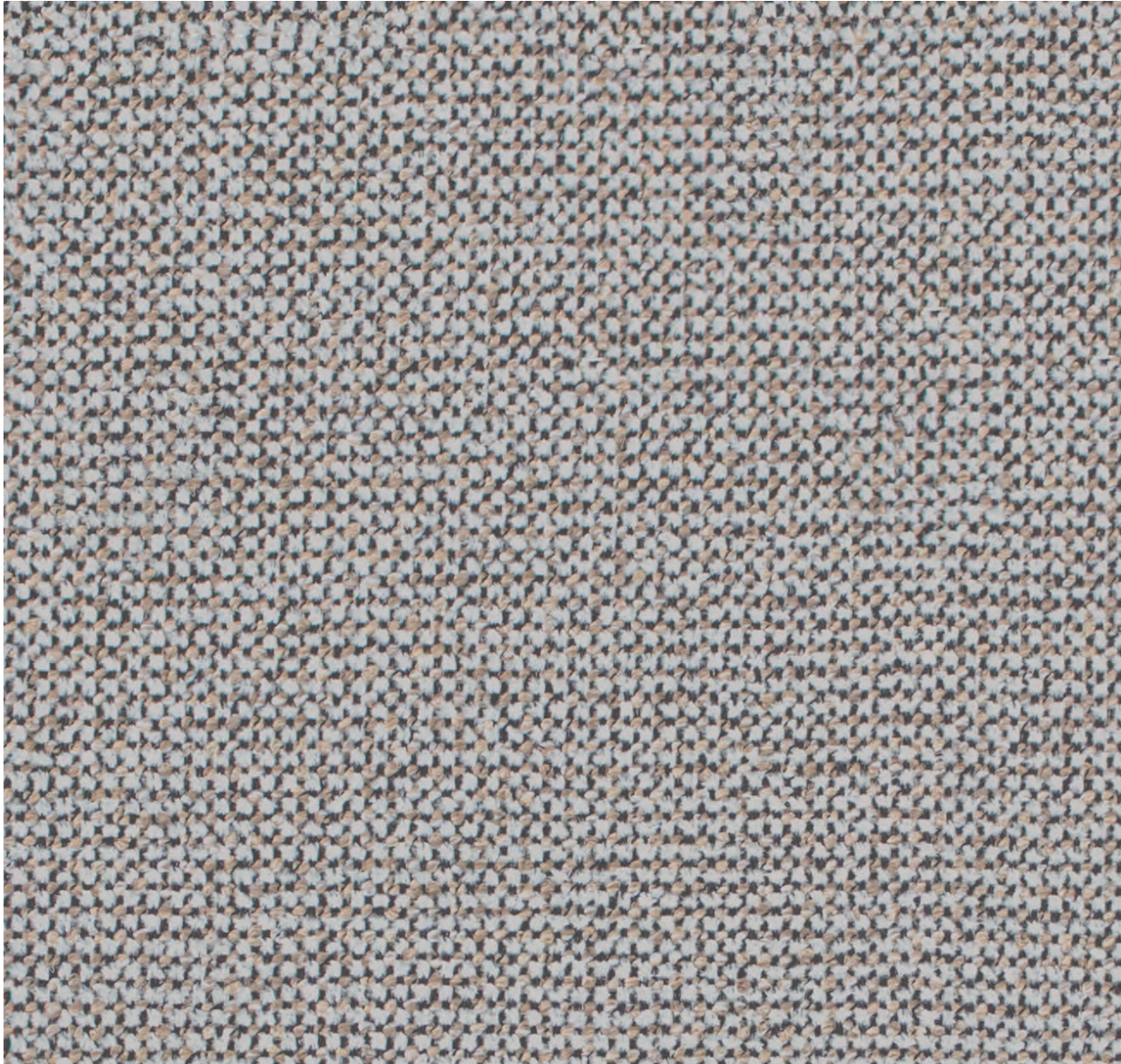
GROUP 2

Matino

Melina

Roma

MATINO

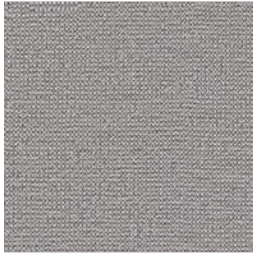


Price group 2

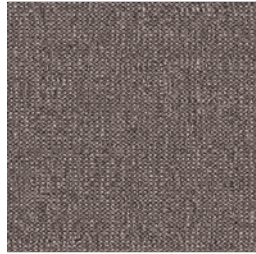
Matino fabric is a technically advanced upholstery fabric made out of chenille fibres. The naturally soft and voluminous Chenille, gives the fabric a firm and soft feel. The fabric is easy to maintain and will look great for years to come.

Fire resistant / OEKO-TEX® certified fabric

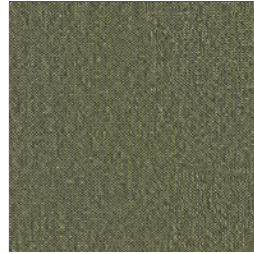
MATINO



Natural
4670



Latte
4671



Moss
4672



Steel
4673



Anthracite
4674

Price group 2

Composition: **100% Polyester**

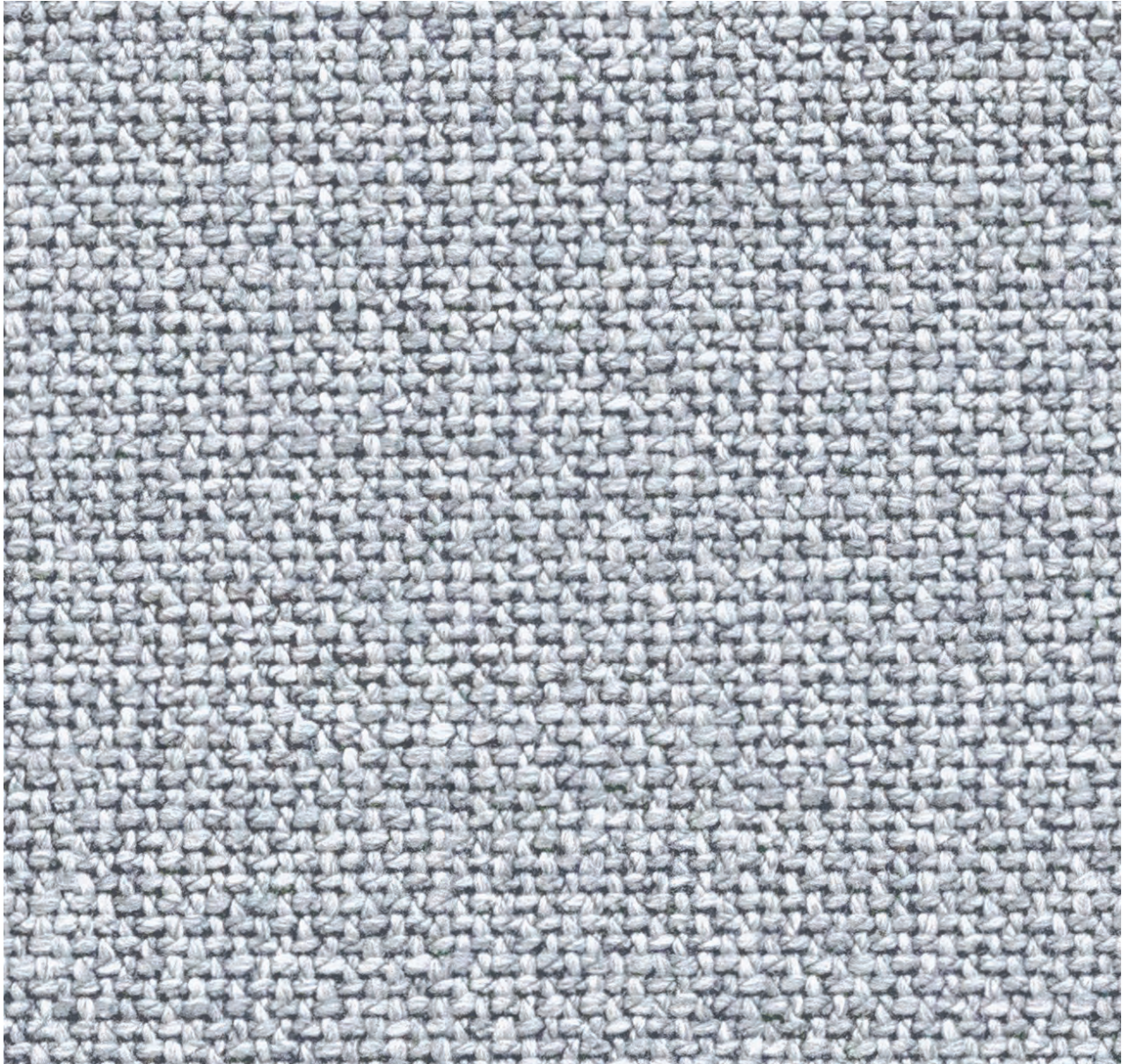
Abrasion Resistance: **68.000 martindale**

Fastness to light 1-8 (8 = best): **5**

Pilling scale 1-6 (6 = best): **4-5**

Fire resistant / OEKO-TEX® certified fabric

MELINA

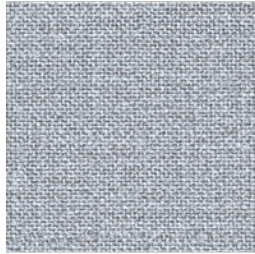


Melina has a rich and thick texture with great depth. The yarn varies in thickness, contributing to a sophisticated look. It will give any furniture an exclusive look and feel. Choose between various cool colours.

Price group 2

Fire resistant / OEKO-TEX® certified fabric

MELINA



Grey Breeze
4680



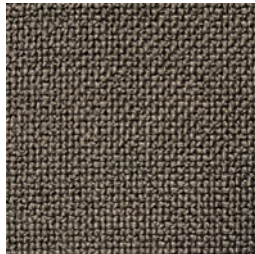
Inner Green
4682



Simply Beige
4683



Rhino Grey
4684



Brown
4681

Composition: **85% Polyester, 15% Acrylic Chenille**

Abrasion Resistance: **50.000 martindale**

Fastness to light 1-8 (8 = best): **5**

Pilling scale 1-6 (6 = best): **4-5**

Price group 2

Fire resistant / OEKO-TEX® certified fabric

ROMA



Price group 2

Trendy bouclé fabric with a soft, inviting feeling. Its unique structure gives an exclusive look and in combination with strong durability you have a long-lasting fabric.

Fire resistant / OEKO-TEX® certified fabric

ROMA



Nature
4690



Off White
4691



Latte
4692



Nougat
4693

Composition: **94% Polyester, 6% Acrylic**

Abrasion Resistance: **100.000 martindale**

Fastness to light 1-8 (8 = best): **7-8**

Pilling scale 1-6 (6 = best): **4**

Price group 2

Fire resistant / OEKO-TEX® certified fabric

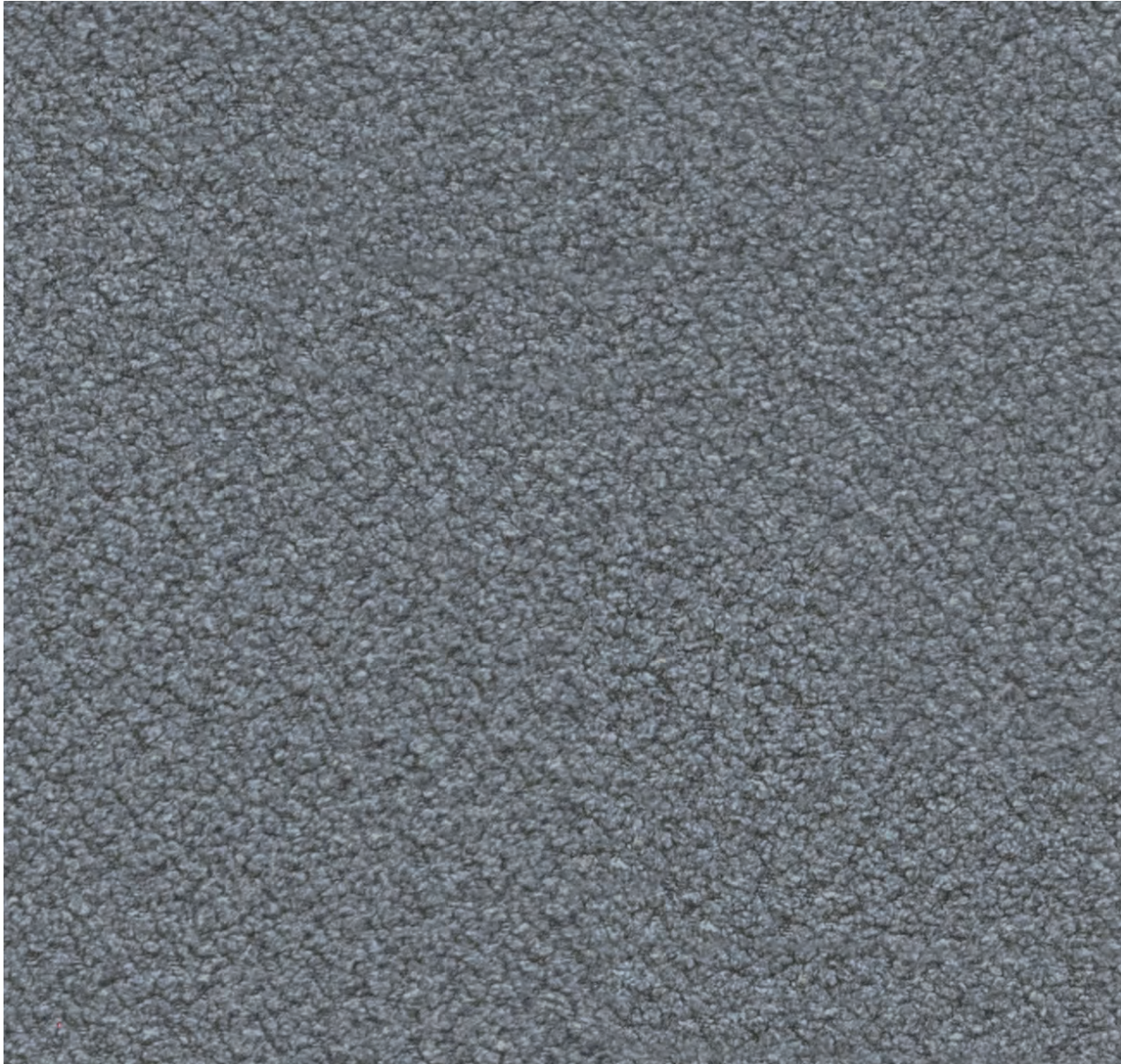
GROUP 3

Bormio

Re-Born

Veneto

BORMIO



Price group 3

The fleecy-looking surface of this up-holstery fabric is immediately notice-able. Not only visually – but Bormio is also unmistakable in terms of it's feel. The finely coordinated two-toned finish of this fabric makes every piece of furniture unique.

Fire resistant / OEKO-TEX® certified fabric

BORMIO



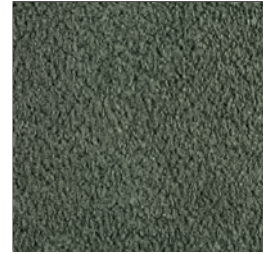
Soft Grey
4700



Anthracite Grey
4701



Vanilla Cream
4702



Olive
4704

Price group 3

Composition: **100% Polyester**

Abrasion Resistance: **40.000 martindale**

Fastness to light 1-8 (8 = best): **5**

Pilling scale 1-6 (6 = best): **4**

Fire resistant / OEKO-TEX® certified fabric

RE-BORN



Price group 3

Re-Born is a sustainable alternative to the ordinary fabric solutions. Re-Born is woven yarn, which contains recycled pet bottles and is registered as GRS - Global Recycle Standard certified. The used plastic bottles are collected to avoid the bottles ending up in nature. The Re-Born fabric has a matt and rich appearance.

Fire resistant / OEKO-TEX® certified fabric

RE-BORN



Zink Grey
4720



Steel Grey
4721



Natural Beige
4722

Price group 3

Composition: **60% Recycled Polyethylen, 40% Polyester**

Abrasion Resistance: **100.000 martindale**

Fastness to light 1-8 (8 = best): **4-5**

Pilling scale 1-6 (6 = best): **4**

Fire resistant / OEKO-TEX® certified fabric

VENETO



Price group 3

Indulge your senses in this bouclé fabric that brings upholstered objects to life through its tactile surface and nuanced colour palette. The delicate yet strong looped texture breathes a lively feel to any design piece. It is also worth noting that Veneto keeps its colour well even after exposure to natural and artificial lighting over time.

Fire resistant / OEKO-TEX® certified fabric

VENETO



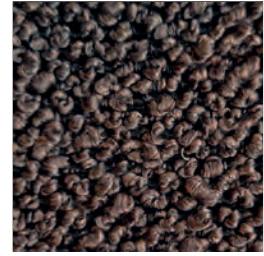
White
4730



Nature
4731



Sand
4732



Chocolate
4733



Light Grey
4734

Composition: **100% Polyester**

Abrasion Resistance: **35.000 martindale**

Fastness to light 1-8 (8 = best): **6**

Pilling scale 1-6 (6 = best): **4-5**

Price group 3

Fire resistant / OEKO-TEX® certified fabric

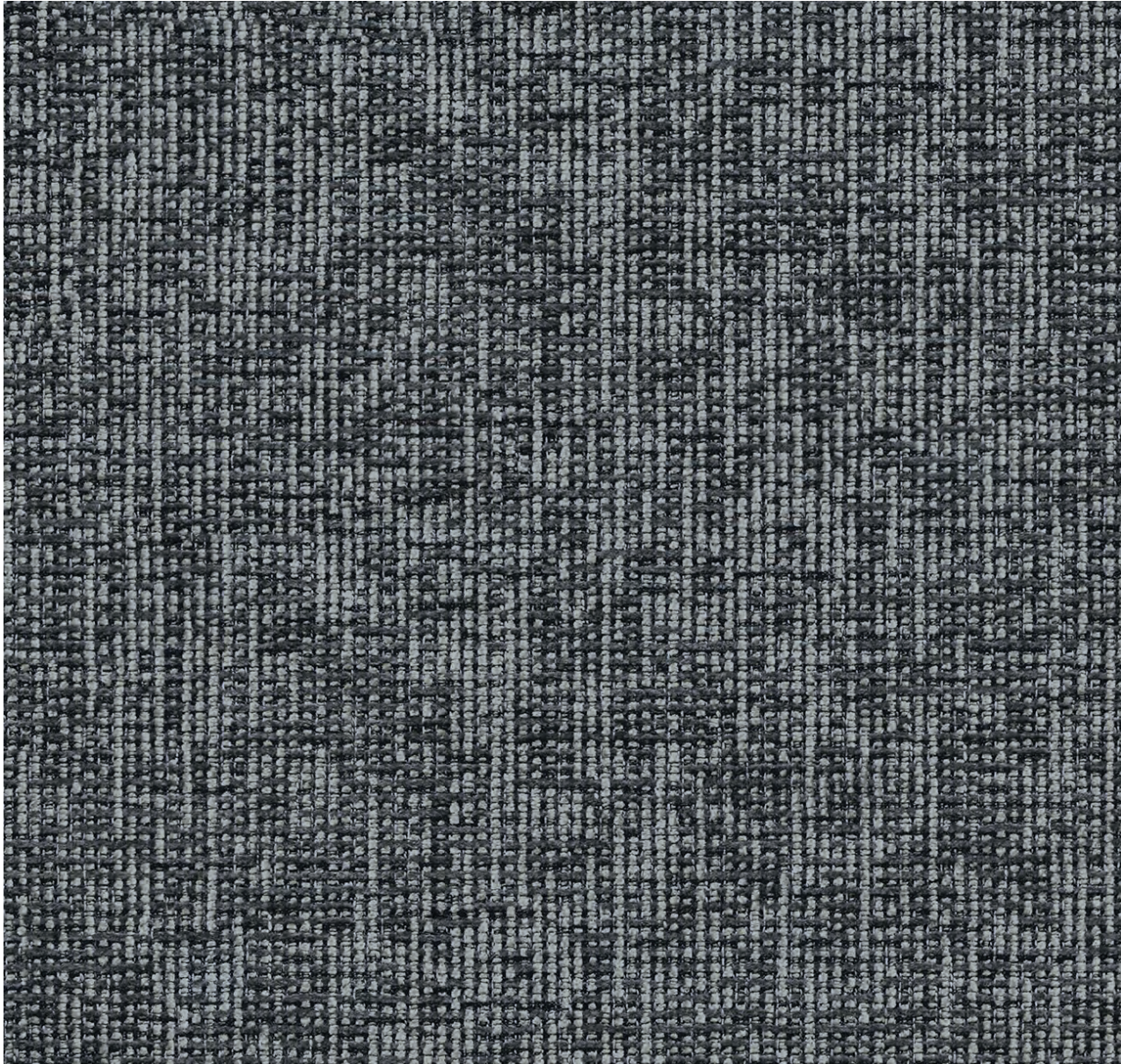
GROUP 4

Alba

Rock

Wildflower

ALBA

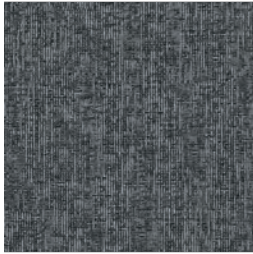


Price group 4

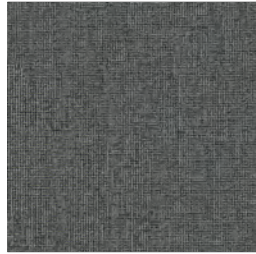
Alba is a jacquard chenille woven fabric with an exclusive look and beautiful structure. The exclusive Alba fabric comes in various colours and is a real eye-catcher. The texture and the soft feel is closely associated with high-end fashion garments. has a high abrasion resistance.

Fire resistant / OEKO-TEX® certified fabric

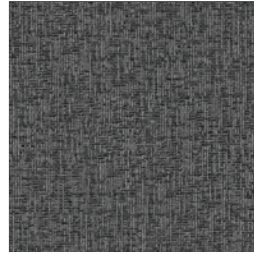
ALBA



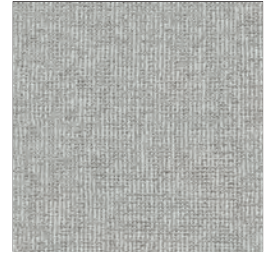
Granite Grey
4740



Moss Green
4741



Grey Forrest
4742



Sandy Shell
4743

Price group 4

Composition: **100% Polyester**

Abrasion Resistance: **70.000 martindale**

Fastness to light 1-8 (8 = best): **5**

Pilling scale 1-6 (6 = best): **4-5**

Fire resistant / OEKO-TEX® certified fabric

ROCK



Rock is a modern upholstery fabric manufactured from simple fibres, without hair, of rough natural texture creating a smooth, uniform layer. Rock fabric has an exclusive look and beautiful structure.

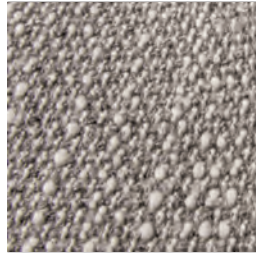
Price group 4

Fire resistant / OEKO-TEX® certified fabric

ROCK



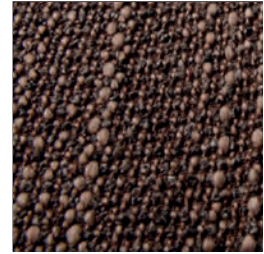
Natural
4630



Light Grey
4631



Beige
4632



Brown
4634

Composition: 51% Rolefin, 27% Polyester, 22% Acrylic

Abrasion Resistance: 35.000 martindale

Fastness to light 1-8 (8 = best): 5

Pilling scale 1-6 (6 = best): 4

Price group 4

Fire resistant / OEKO-TEX® certified fabric

WILDFLOWER



Price group 4

Wildflower fabric is like a velvet crush with a linen affair. The fabric is made of chenille fibres. Wildflower is a modern fabric with luxurious softness.

Fire resistant / OEKO-TEX® certified fabric

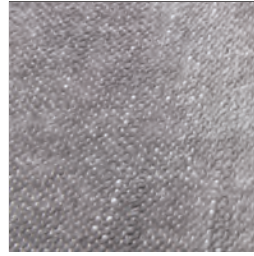
WILDFLOWER



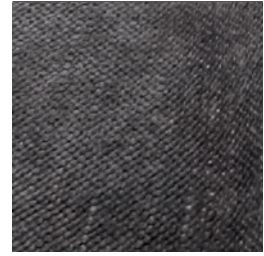
Cream
4640



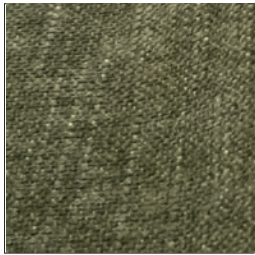
Cold Beige
4641



Light Grey
4647



Grey
4644



Forrest Green
4646

Price group 4

Composition: **93% Polyester, 7% Linen**

Abrasion Resistance: **25.000 martindale**

Fastness to light 1-8 (8 = best): **4**

Pilling scale 1-6 (6 = best): **4**

Fire resistant / OEKO-TEX® certified fabric

LEATHER

Omaha

Dakota

Savoy

Taromina

Nature

OMAHA



Omaha is a genuine top grain leather with full protection on the elegant top surface. The Omaha leather has a firm touch and feel. The leather is made of buffalo and easy to clean and maintain. It has a high resistance to fading.

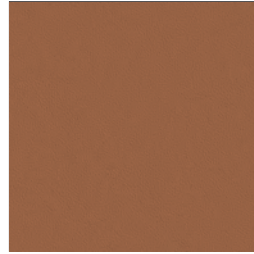
OMAHA



Ink Jet Black
0730



Chestnut Brown
0731



Cognac Brown
0732



Warm Oakbark Brown
0733



Slate Grey
0734

Thickness: **0,9-1,1 mm**

Type: **Corrected**

Treatment: **Protected**

DAKOTA

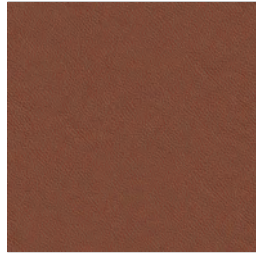


Dakota is a genuine top grain leather with a heavy grain structure. It has full protection on the top surface. The Dakota leather has a firm touch and feel. The leather is made of buffalo and easy to clean and maintain. It has a high resistance to fading.

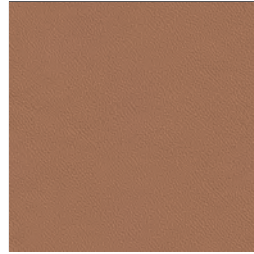
DAKOTA



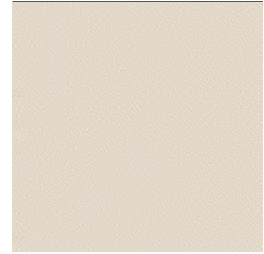
Deep Black
0740



Old Chestnut Brown
0741



Modern Cognac Brown
0742



Warm White
0743



Warm Mineral Grey
0744

Thickness: **1,1-1,3 mm**

Type: **Corrected**

Treatment: **Protected**

SAVOY



Savoy is a thick top grain semi-aniline cow leather. This exclusive leather has a smooth, comfortable natural touch and feel. The leather is highly resistant to stains and fading. Truly the perfect choice when it comes to leather that you want to have the best look for years and years.

SAVOY



Platin Black
0960



Dark Brown Amaretto
0962



Cognac Brown
0964



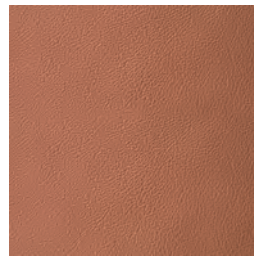
Grey
0965



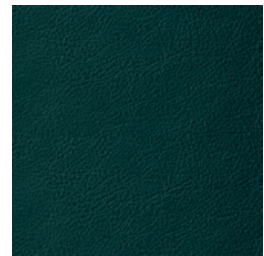
Off White
0966



Light Grey
0967



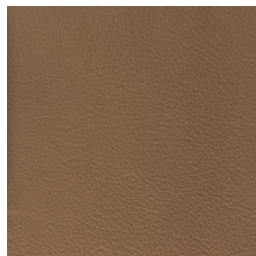
Modena Brown
0970



Deep Forrest Green
0972



Olive
0976



Taupe
0977



Henna
0978

Thickness: **1,4 mm**

Type: **Soft pigmented leather**

Treatment: **Protected**

TAROMINA



Designed for modern living, this semi-aniline leather exudes an upscale look while remaining suited for everyday use. Its exclusive appeal and butter-like softness are protected with a thin protective coating against stains and wear, allowing the natural grain of the leather to retain its character. It is available in a natural colour scheme to fit into a diverse range of interior styles.

TAROMINA



Cognac
0760



Caramel
0761



Taupe
0762



Black
0763

Thickness: **1,8-2,0 mm**

Type: **Semi aniline**

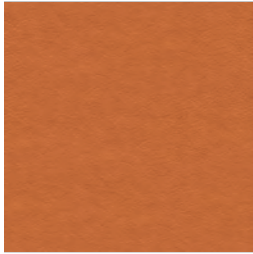
Treatment: **Protected**

NATURE



If you want natural and very soft leather, Nature is a great choice. This leather will give you value for your money. Nature is thick, comfortable and very sophisticated leather.

NATURE



Cognac
0720



Hazelnut Brown
0721



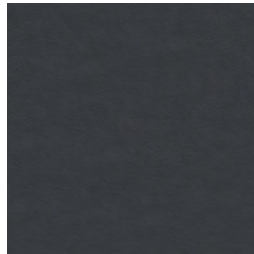
Olive Green
0722



Jade Black
0723



Chestnut Brown
0924



Warm Stone Grey
0925

Thickness: **1,3-1,4 mm**

Type: **Full aniline**

Treatment: **Natural**

SURFACE

WOOD COLOUR



Oak 3500/3550



Walnut 3600/3650

FLEXLUX

[FLEXLUX.COM](https://flexlux.com)